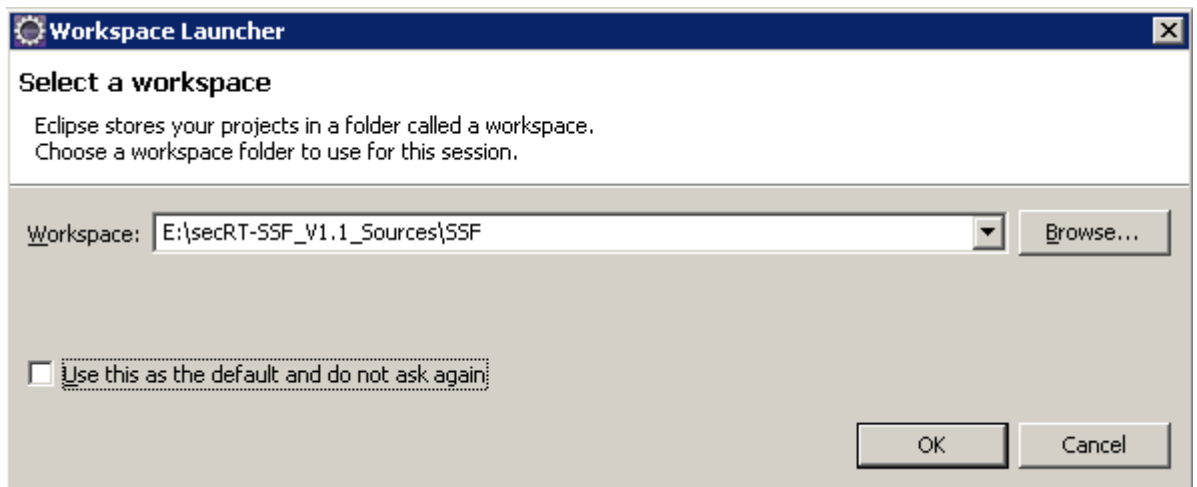


1 Tutorial : Getting started with secRT OpenSource

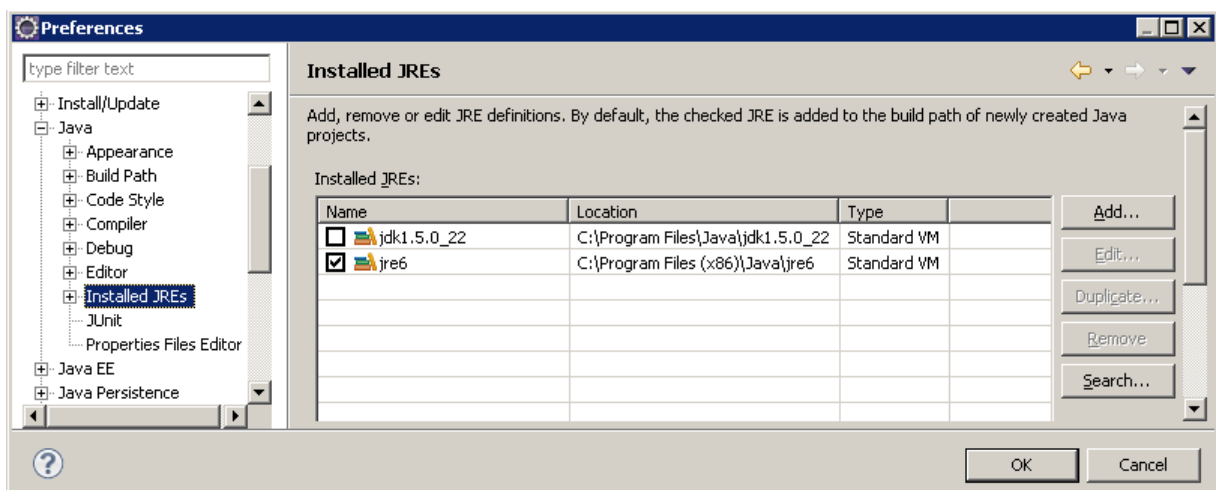
If not done already download our SecRT sourcecode from <http://secrt.corisecio.com/download>. This download includes a complete Eclipse workspace, ready for you to use. Unzip the archive and store it in a location of your choice.

1.1 Using the workspace

- Open your Eclipse IDE (<http://www.eclipse.org/downloads/>) and choose the newly created directory as your workspace.

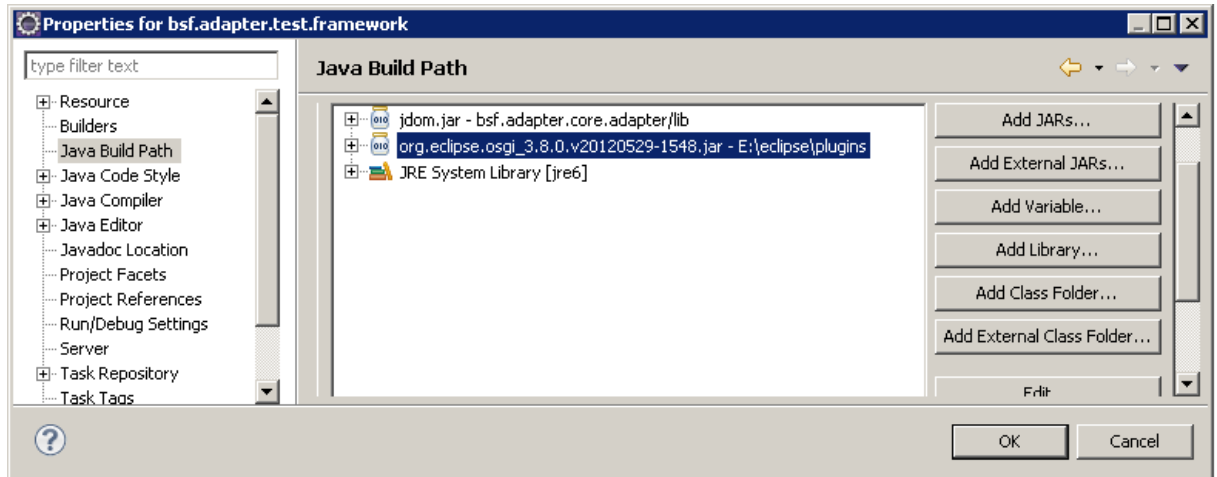


- Make sure to add a Java JDK (1.5 or higher) as standard JVM to your Eclipse environment (window -> preferences -> installed JREs) and make it your default JRE



- Find the bundle `bsf.adapter.test.framework` in your Project Explorer and add `org.eclipse.osgi_<Version>.jar`, from your Eclipse plugin directory, to the Java

Build Path. Select bsf.adapter.test.framework and click the right mouse button (properties -> Java Build Path -> Add External Jars)

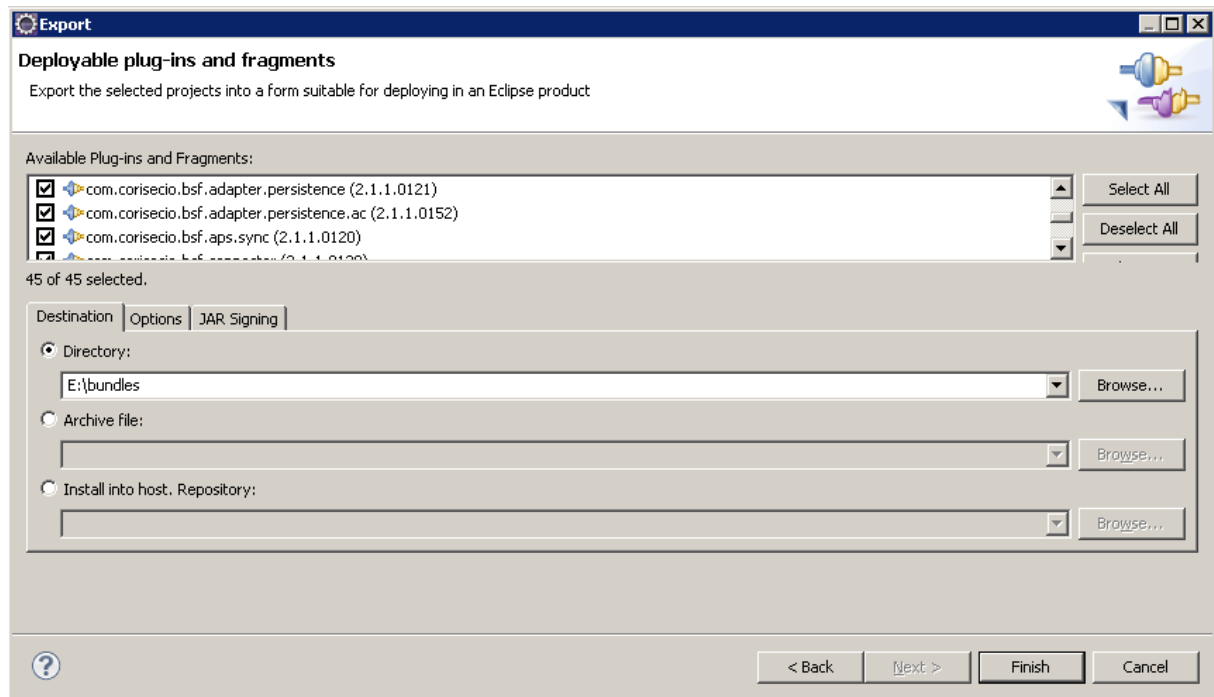


1.2 Building the Bundles

1.2.1 Building with Eclipse

For building the bundles from within Eclipse, you need to export all deployable bundles. Go on File -> Export... -> Plug-in Development -> Deployable plug-ins-and fragments. Click on Next.

Make sure you select all packages and define a target directory and click on Finish.



1.2.2 Building with Ant (recommended)

In addition to building the bundles, the ant script will also sign your bundles and generate a report on the junit code coverage.

- Download Apache™ Ant from <http://ant.apache.org> and install it to a directory of your choice. Make sure to add the bin directory to your system PATH variable.
- Download Cobertura from <http://cobertura.sourceforge.net/download.html> and copy cobertura.jar into the Ant lib directory
- Download junit from <http://junit.org> and copy junit.jar into the Ant lib directory
- Create a private key for signing your bundles. (<http://www.openssl.org>)

After you have prepared ant you need to configure your build.xml by altering the following parameters

Parameter	Value
Ssf.dir	Absolute path to your SSF-Workspace
Java.lib	Absolute path to rt.jar from your Java installation
Env.eclipse	Absolute path of your Eclipse installation
Sign.alias	Alias of the signature key
Sign.pass	Passphrase of signature key
Sign.file	Absolut path and name of your signature key

- Run ant from within the Eclipse Workspace folder to build all bundles, which can be found in the build folder.